



THE TULE RIVER TRIBE

**TREDC Renewable
Energy Projects**

Dennis Ickes, CEO

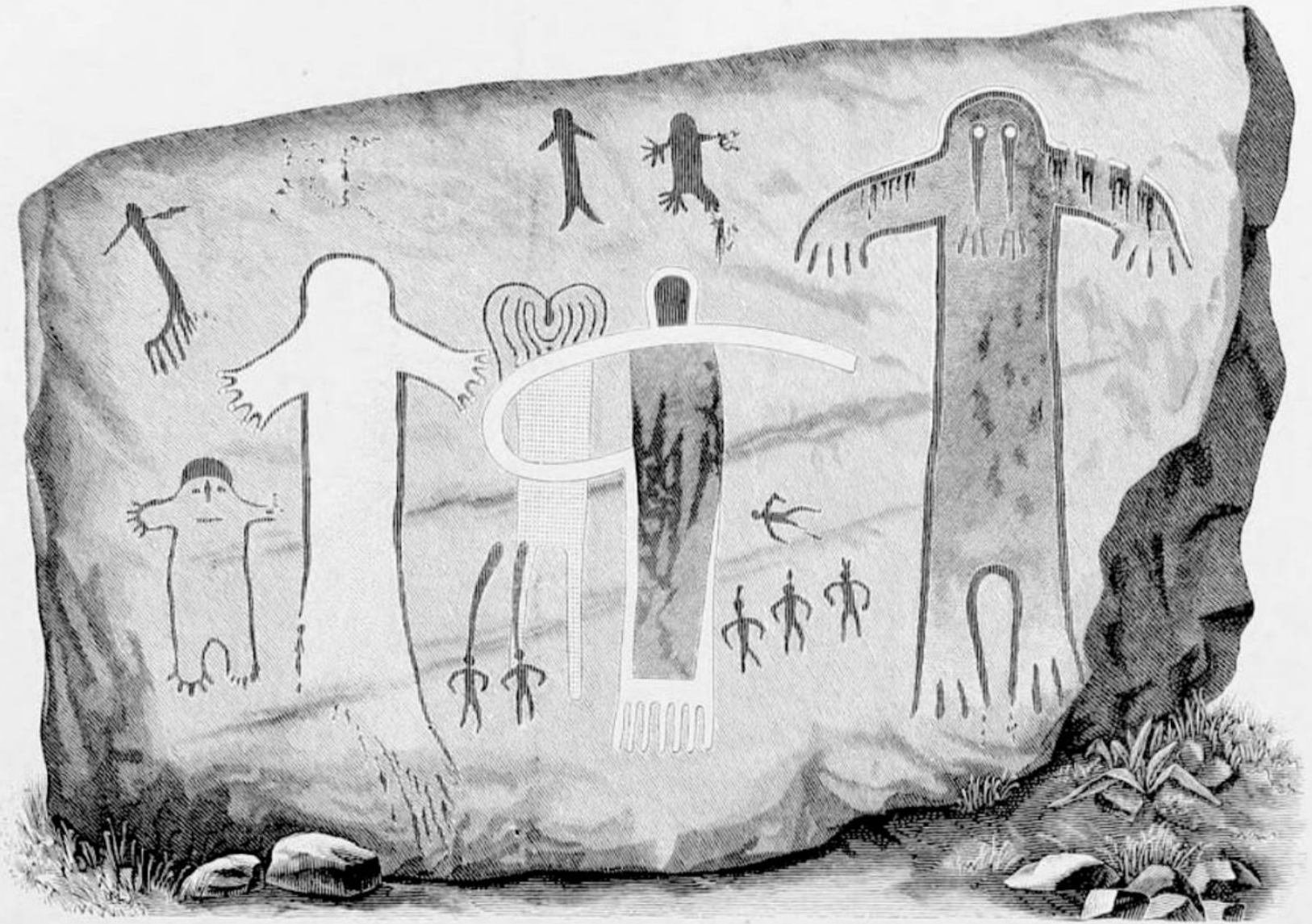
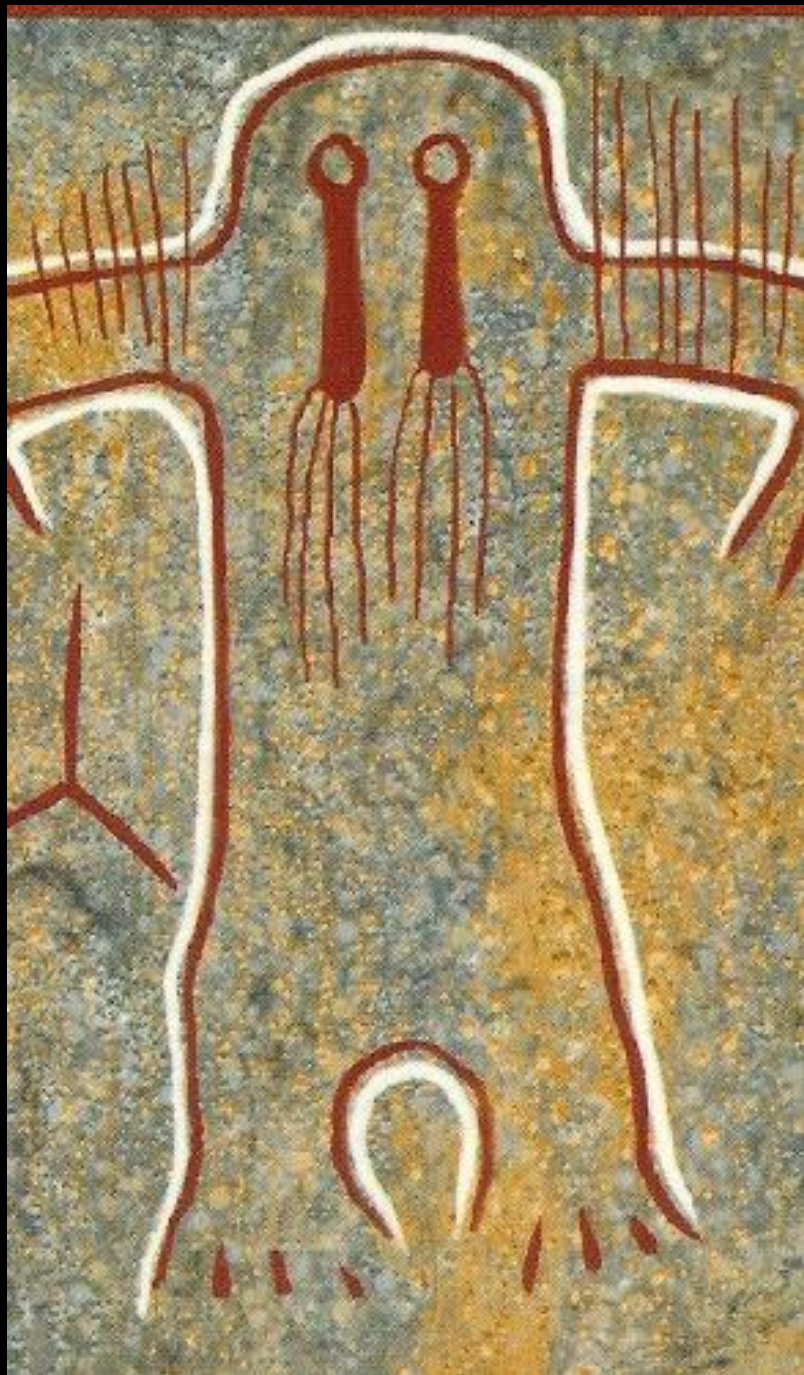
Tule River Indian Tribe of California



The Tule River Indian Tribe of the Tule River Reservation is a federally recognized tribe of Native Americans called Yokuts. The Tule River Reservation is in Tulare County, California.

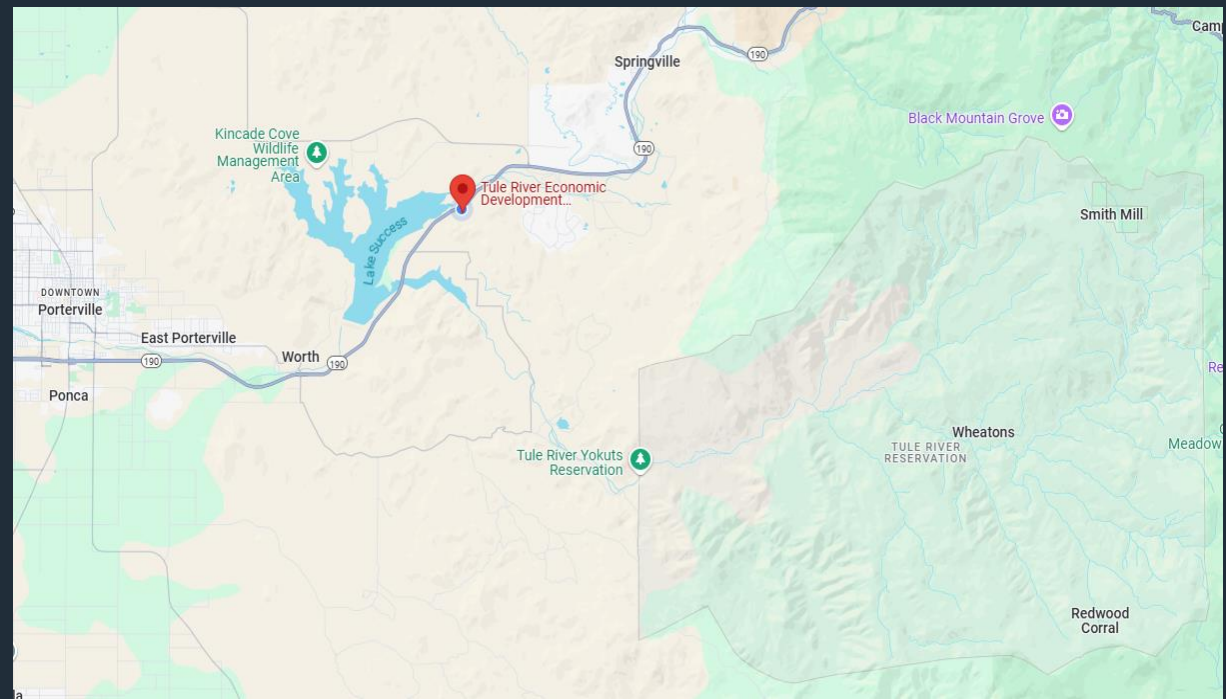
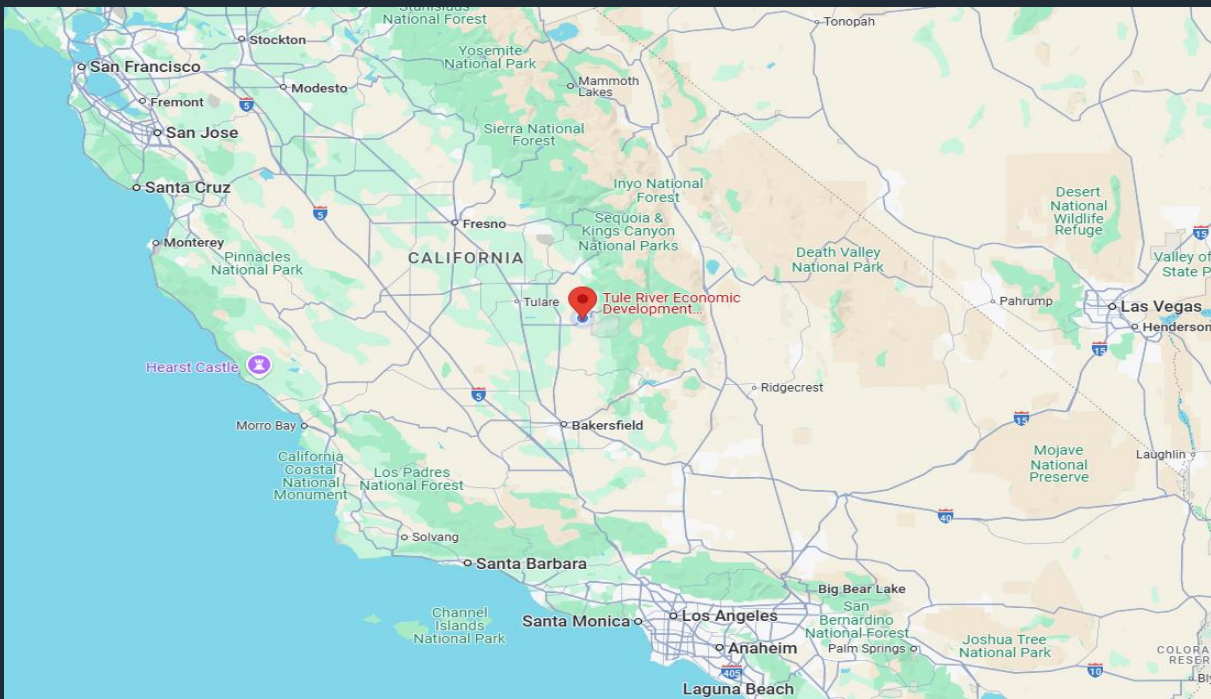
In the old days, basket weaving was not only a common practice but a necessity of everyday life. Baskets were used for cooking, gathering and storage. “Baskets were the early Tupperware,” says Basket Weaver and Tule River Tribal Member Nicola Larsen.





5	2	8	9	4	1
6		11	10	3	

FIG. 155.—Rock-painting. Tule River, California.



**~2,000 TRIBAL
ENROLLMENT
1,100 RESIDENTS
RESERVATION
84.29 SQ MILES**

GRANTS

<u>Location</u>	<u>Granting Agency</u>	<u>Project</u>	<u>Owner</u>	<u>Amount</u>
EFTP1				
	EnergIIZE	Medium/Heavy Duty Charger	TREDC	\$147,942
	SJVAPCD/Charge Up	2 180kW & 1 level 2 EV Charger	TREDC	\$50,000
	California Energy Commission	2 120kW & 1 level 2 EV Charger	GC Green	\$710,000
EFPT2				
	EnergIIZE	Medium/Heavy Duty Charger	TREDC	\$147,942.47
	CALeVIP	3 180kW EV Chargers	TREDC	\$65,814
	SJVAPCD/Charge Up	3 180kW EV Chargers	TREDC	\$50,000
	PG&E	EV Infrastructure	TREDC	\$400,000+
	Volkswagen	Level 2 Charger	TREDC	\$12,800
TREDC				
	EPA	Biomass to Biochar	TREDC	\$14,708,000
	Grid Alternatives	Energy Plan Grant	TREDC	\$25,000
	NREL Waste to Energy	Technical Assistance	TREDC	40 Hours
	California Dept of Conservation	Technical Assistance	Kore	\$500,000
	DOE	Solar	TREDC	\$1,769,214
	DOE	Clean Energy Innovator Fellow	Tribe/TREDC	\$250,000
		Energy Conservation Assistance Act		
	CEC	Loan/Battery	TREDC	\$2,300,000
	EPA (submitted)	Community Change Grant Project	TREDC	\$20,000,000



TULE RIVER
ECONOMIC DEVELOPMENT CORP.



The Tribe does not take electrical power for granted -
The Reservation connected to the power grid through Southern California Edison in 1968.

Prior to connecting to SCE, only a few tribal members could afford generators for electricity.

Approximately 50% of the Tribal membership suffer from extreme poverty, necessitating the primary goal of Tule River Economic Development Corporation (TREDC) to create economic opportunities.

This project is saving the Tribal Commercial Facilities 98% of the annual expenses of:

TREDC Corporate building – Porterville, CA

Eagle Feather Trading Post #1 – Porterville, CA

Eagle Feather Trading Post #2 – Avenal, CA

Tule River Biomass Facility – Tipton, CA



TULE RIVER

ECONOMIC DEVELOPMENT CORP.

THIS PROJECT WILL PROVIDE 521 KILOWATTS (KW) OF SOLAR PHOTOVOLTAIC (PV) SYSTEMS FOR FOUR TRIBAL COMMERCIAL FACILITIES TO OFFSET 98% OF THE ANNUAL POWER CONSUMED BY THESE BUILDINGS. THE PROJECT WILL SAVE THE TRIBE NEARLY \$6.6 MILLION OVER THE LIFE OF THE SYSTEMS.

THE TULE RIVER MEMBERS TAKE PRIDE IN ENVIRONMENTAL PRESERVATION AND THEIR STEWARDSHIP OF THE NATURAL ENVIRONMENT, ESPECIALLY THEIR OWN GIANT REDWOOD FOREST IN THE UPPER ELEVATION OF THE RESERVATION, AND THE TRT SOLAR SYSTEM PROJECT REPRESENTS AN ENDEAVOR TO ACHIEVE DEVELOPMENT OF CLEAN AND SUSTAINABLE ENERGY, PROVIDE ECONOMIC SUSTAINABILITY, AND ENHANCE ENVIRONMENTAL STEWARDSHIP EFFORTS.



TULE RIVER ECONOMIC DEVELOPMENT CORP.

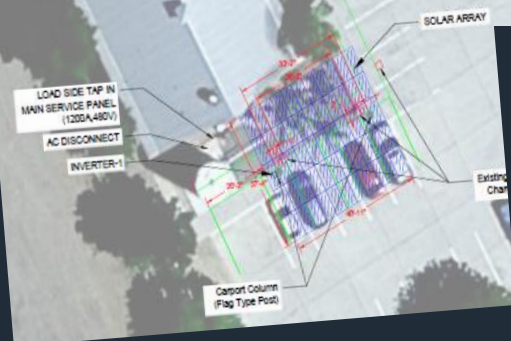


**EFTP1 Ground solar 220 kW –
BESS 372 kWh -2.5 hours**

**Admin Roof solar 34.1 kW –
BESS 185 kWh 3.7 hours**



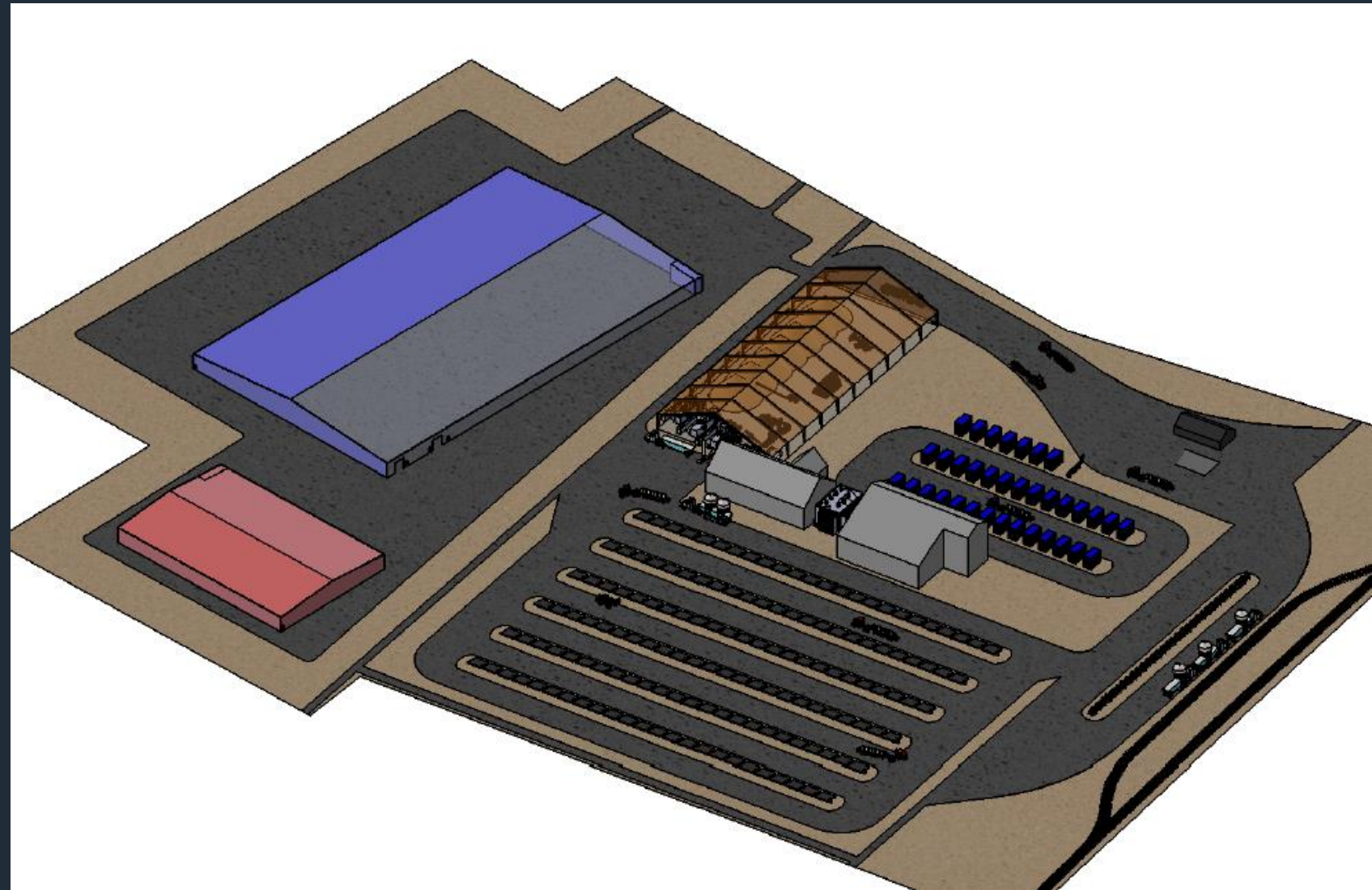
**EFTP2 Ground solar 176 kW –
BESS 372 kWh -2.5 hours**



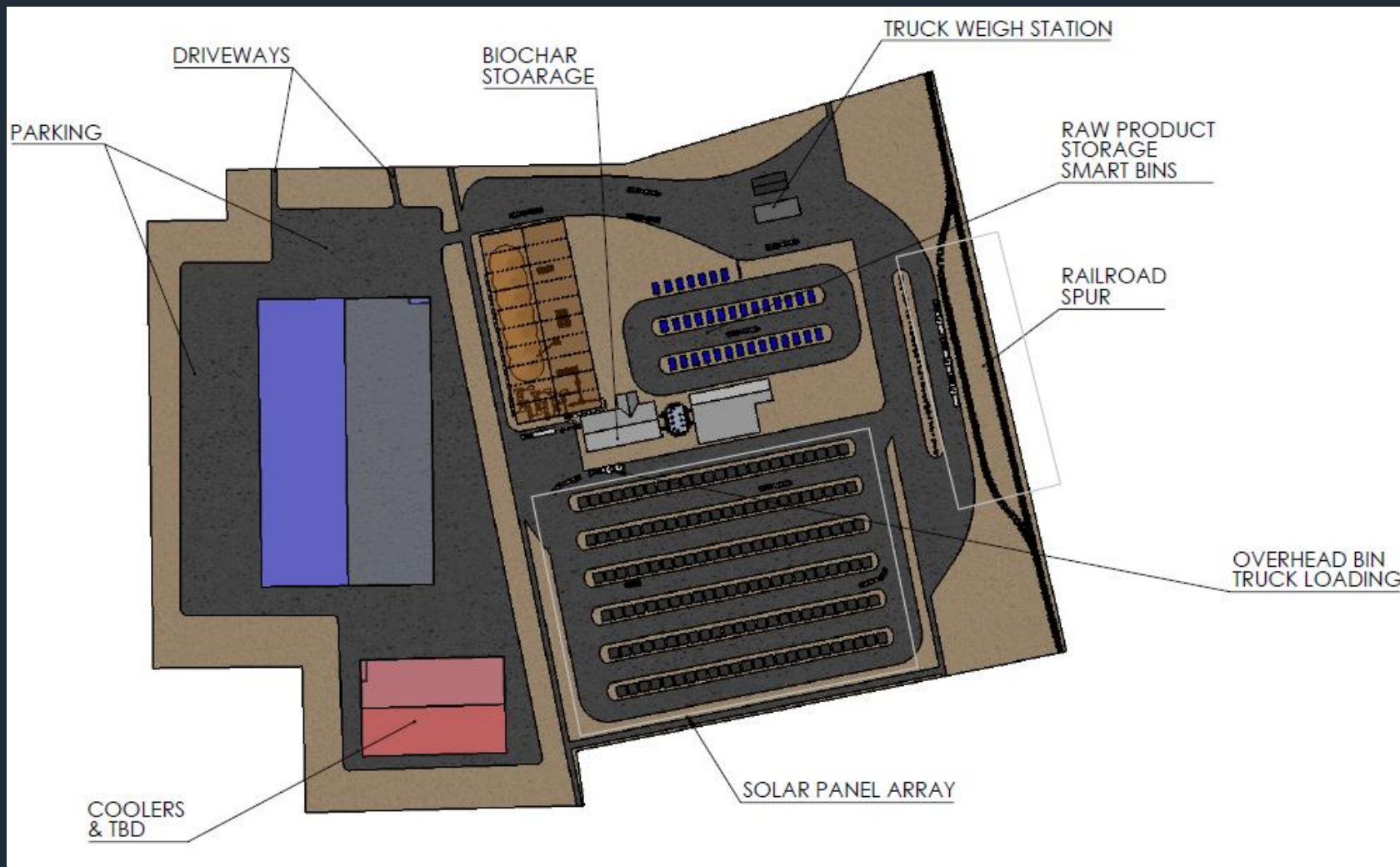
**EFTP2 EV 29.7 kW –
BESS 180 kWh – 3.6 hours**

TULE RIVER BIOMASS TO BIOCHAR PROJECT

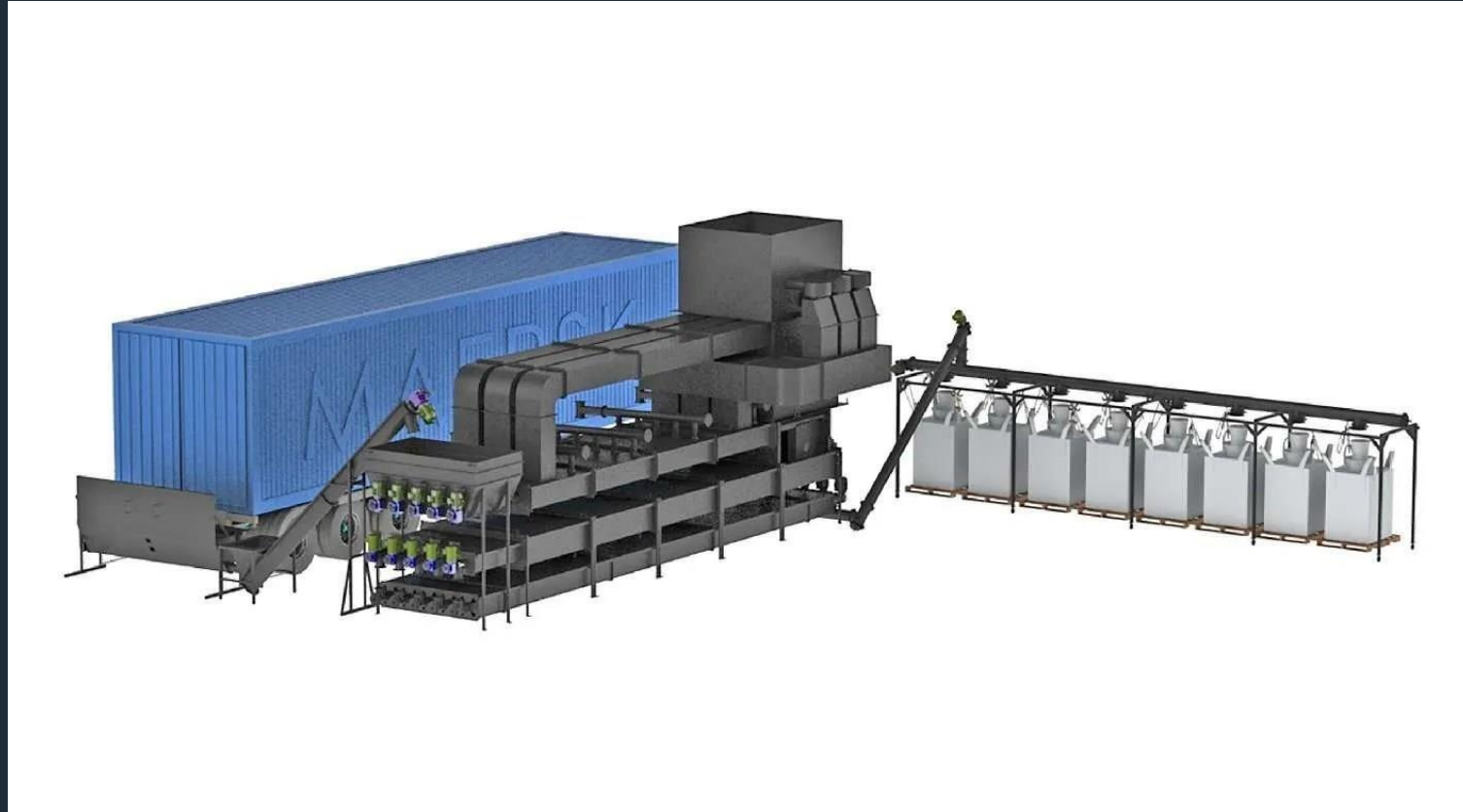
Tipton Roof Solar 89.1 kW – No BESS



BIOMASS TO BIOCHAR SITE LAYOUT



CONVERT 90 TONS OF WOODY BIOMASS TO
BIOCHAR A DAY, 31,500 TONS PER YEAR





TULE RIVER
ECONOMIC DEVELOPMENT CORP.

